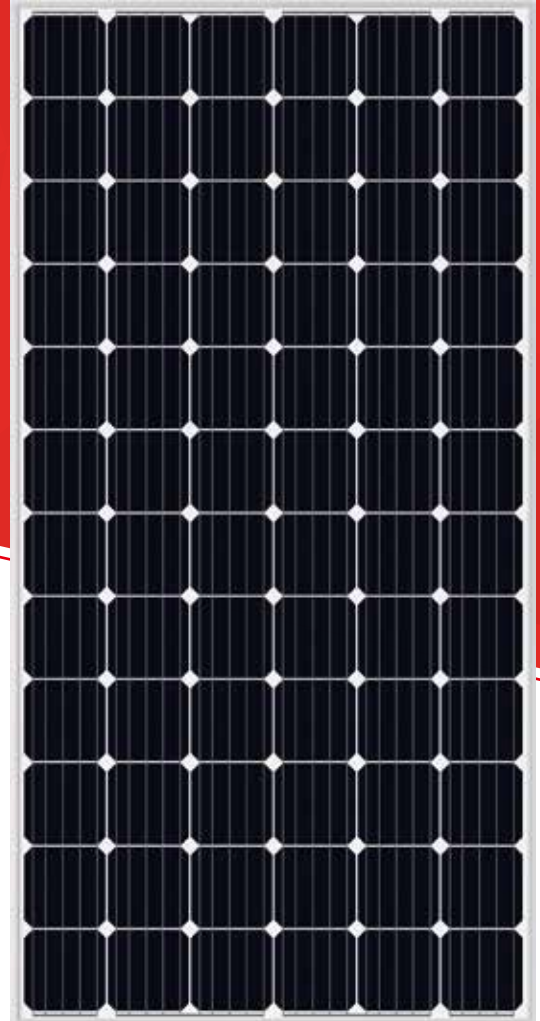


SRP-6MA-HV SERIES 6 INCH 72 CELLS

# 350-365w



## KEY FEATURES



Bankable products



Class C fire safety class



Top rank in Photon yield measurement



Outstanding power output capability at low irradiance



Tested and certified according to newest IEC standard IEC61215:2016



Triple 100% Electroluminescence (EL) tests minimize breakage rate



Tested and certified according to newest IEC standard IEC61730-1:2016 IEC61730-2:2016



World 1st company to pass "Thresher Test" and "On-site Power Measurement Validation" certificate



Withstand and applicable up to 1500V high system voltage

### MANAGEMENT SYSTEM

ISO 9001: Quality management system

ISO 14001: Standard for environmental management system

OHSAS 18001: International standard for occupational health and safety assessment system

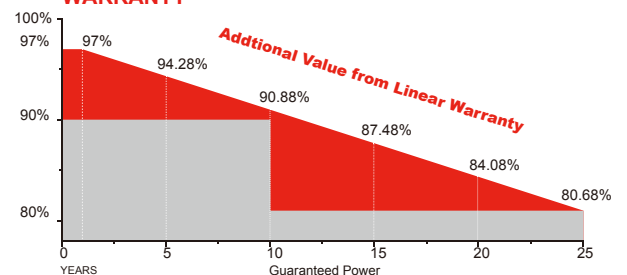
### INSURANCE



### PRODUCT CERTIFICATES



### WARRANTY



Guarantee on product material and workmanship



linear power output warranty

Specifications are subject to change without further notification SRP-DS-EN-2018V2.0 © Copyright 2018 Seraphim



SERAPHIM SOLAR SYSTEM CO., LTD.

[www.seraphim-energy.com](http://www.seraphim-energy.com)

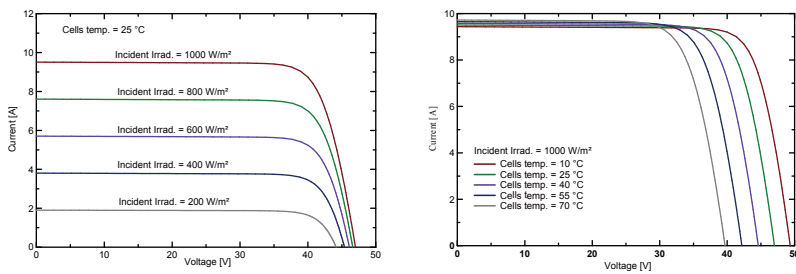
[info@seraphim-energy.com](mailto:info@seraphim-energy.com)

**Electrical Characteristics**

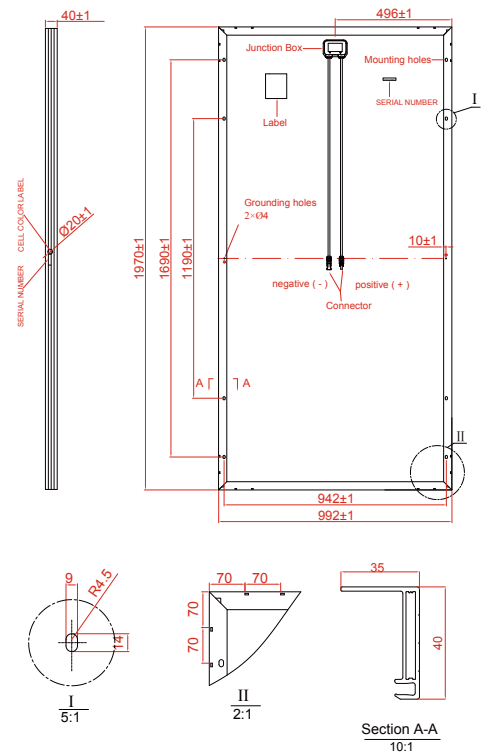
Module Type	SRP-350-6MA-HV		SRP-355-6MA-HV		SRP-360-6MA-HV		SRP-365-6MA-HV	
	STC	NOCT	STC	NOCT	STC	NOCT	STC	NOCT
Maximum Power -P <sub>mp</sub> (W)	350	260	355	263	360	267	365	271
Open Circuit Voltage -V <sub>oc</sub> (V)	47	43.4	47.2	43.6	47.4	43.8	47.6	44.0
Short Circuit Current -I <sub>sc</sub> (A)	9.51	7.68	9.61	7.75	9.70	7.84	9.78	7.90
Maximum Power Voltage -V <sub>mp</sub> (V)	38.1	35.8	38.3	35.9	38.5	36.1	38.7	36.3
Maximum Power Current -I <sub>mp</sub> (A)	9.19	7.27	9.27	7.33	9.36	7.40	9.44	7.47
Module Efficiency STC-η <sub>m</sub> (%)	17.91		18.17		18.42		18.68	
Power Tolerance (W)	(0,+4.99)							
Maximum System Voltage (V)	1500 (TÜV)							
Maximum Series Fuse Rating (A)	20							
Pmax Temperature Coefficient	-0.40%/°C							
Voc Temperature Coefficient	-0.32 %/°C							
Isc Temperature Coefficient	+0.05 %/°C							
Operating Temperature	-40~+85 °C							
Nominal Operating Cell Temperature	45±2 °C							

STC: Irradiance 1000 W/m<sup>2</sup> module temperature 25°C AM=1.5  
 NOCT: Irradiance 800 W/m<sup>2</sup> ambient temperature 20°C wind speed :1m/s Power measurement tolerance: +/-3%

**Curve**



**Technical drawing**



**Mechanical Specifications**

External Dimension	1970 x 992 x 40mm
Weight	21.5kg
Solar Cells	Mono crystalline 156.75 x 156.75 mm (72pcs)
Glass of Both Side	3.2 mm tempered glass, low iron
Frame	Anodized aluminium alloy
Junction Box	IP67
Output Cables	4.0 mm <sup>2</sup> , cable length:1100 mm
Connector	MC4 Compatible
Mechanical Load	5400 Pa

**Packing Configuration**

External Dimension	1970 x 992 x 40mm	
Container	20'GP	40'GP
Pieces per Pallet	27	27
Pallets per Container	10	22
Pieces per Container	270	594

\* All Dimensions in mm  
 \* The above drawing is a graphical representation of the product.  
 For engineering quality drawings please contact SERAPHIM.